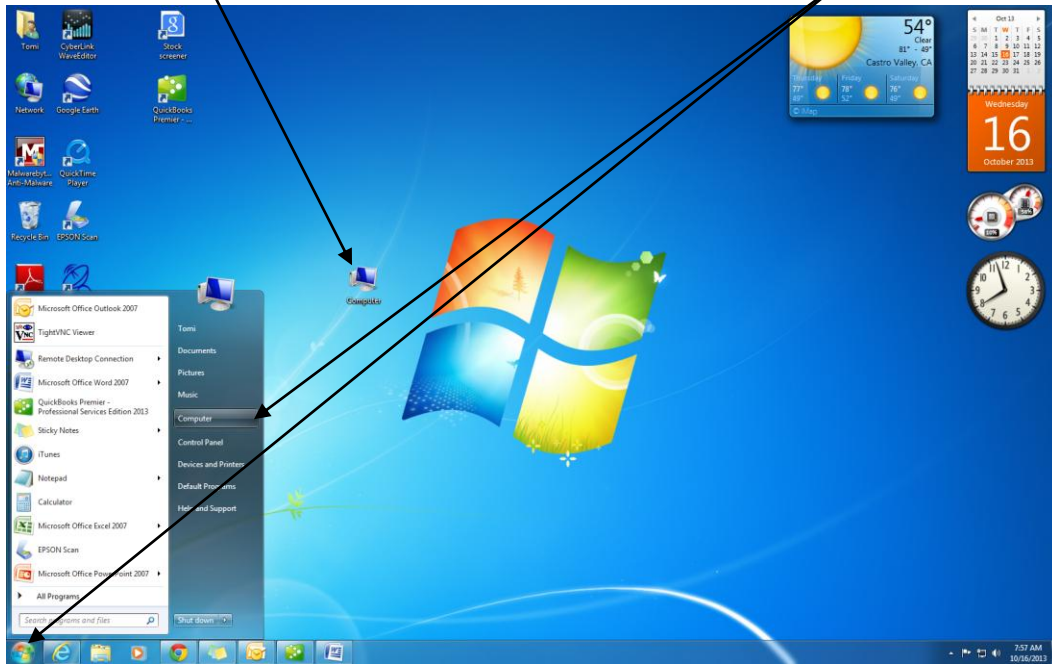
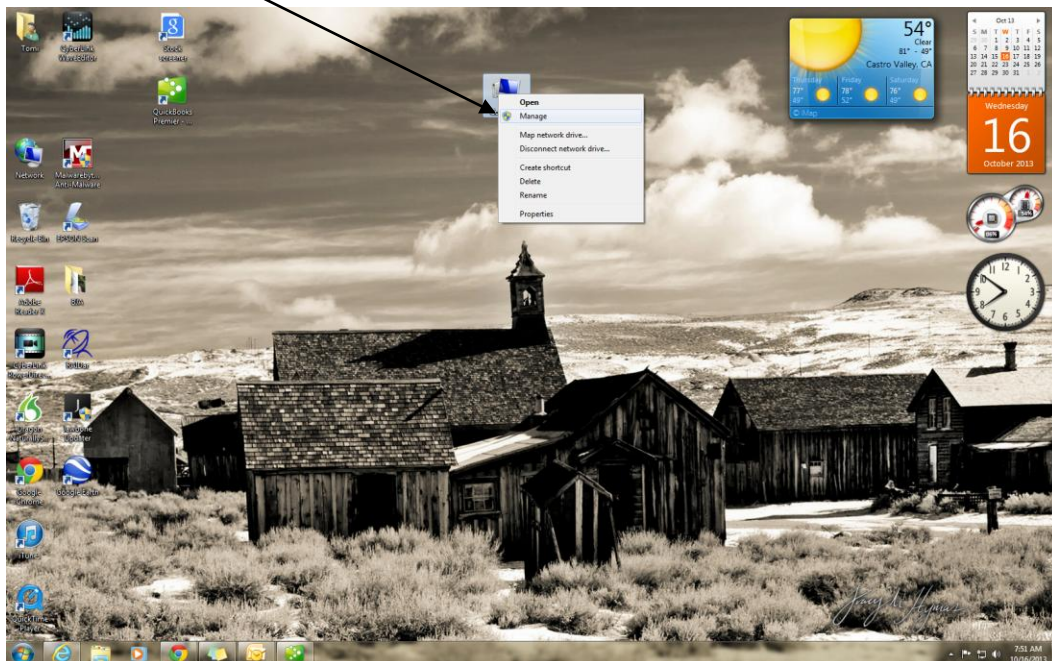


## How to reinstall camera device driver Windows 7.

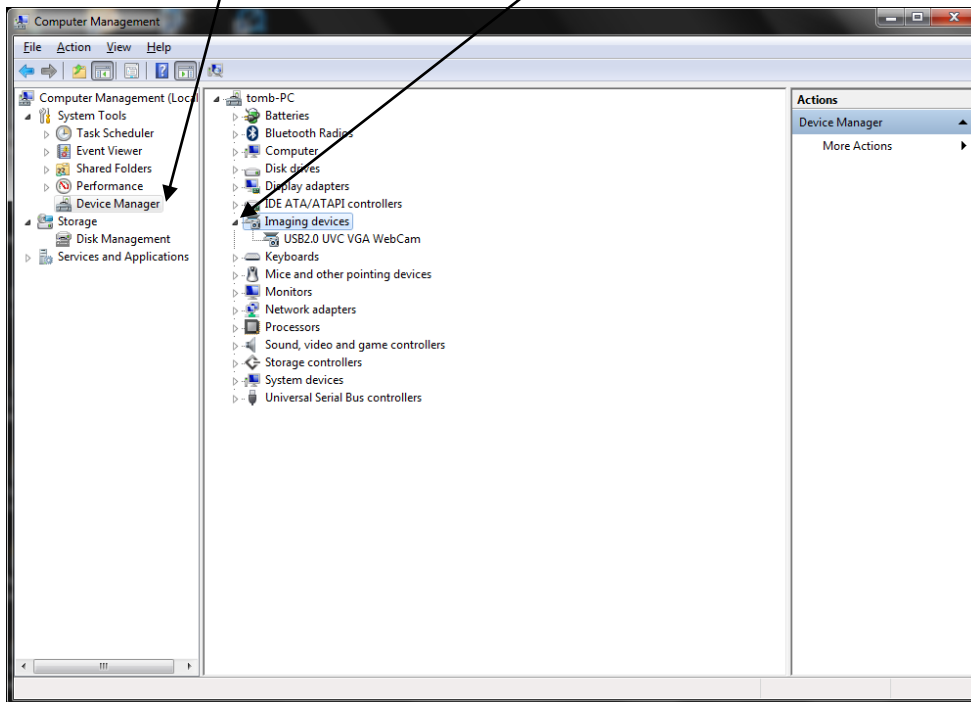
1. Locate Computer icon on desktop and right click or Start button and right click on Computer.



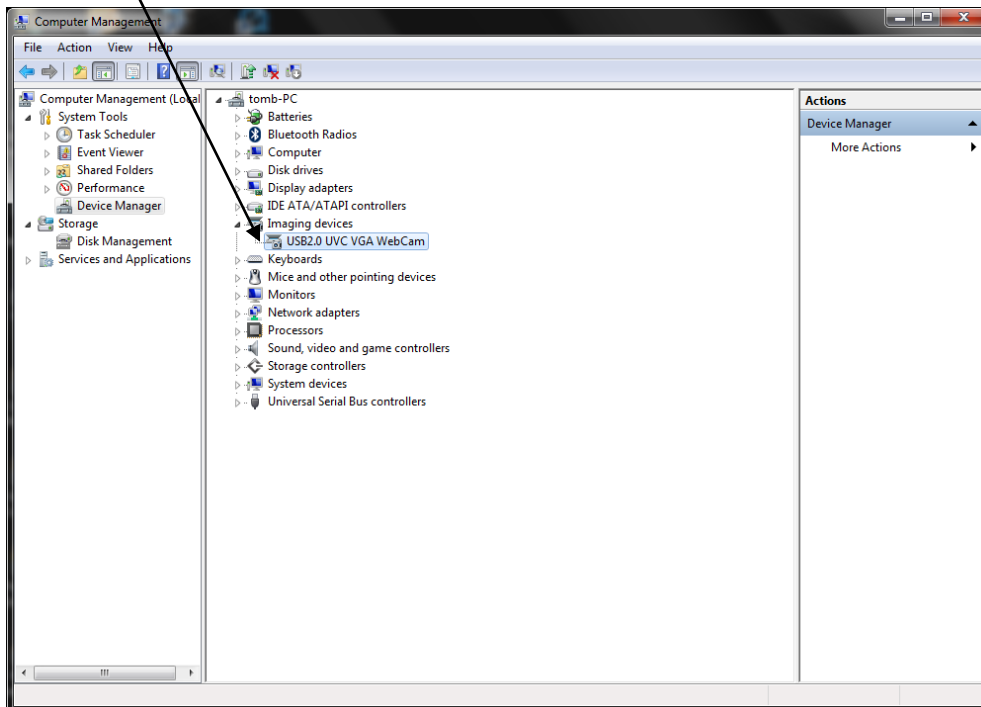
2. Left click on Manage.



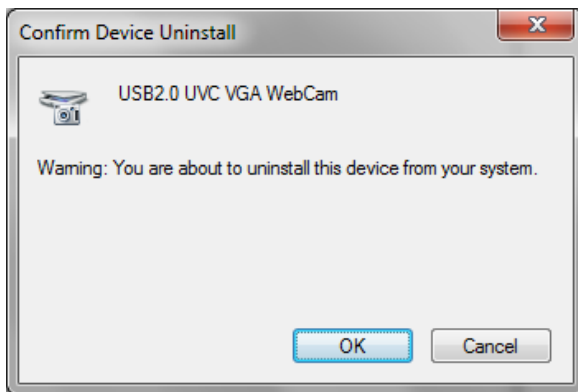
3. Left click on Device Manager and locate Imaging devices left click on diamond



4. Select device right click and Uninstall (note: **device name may be different**)



5. Prompt appears, Confirm Device Uninstall and select OK.



6. Reboot the computer device will automatically reinstall the existing driver.
  - Trouble resolved mission accomplished camera working.
  - If trouble persists contact the IT department .