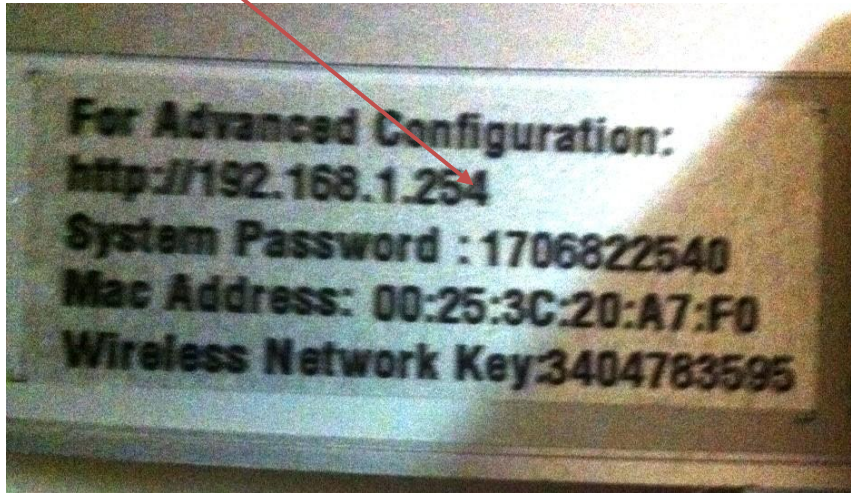
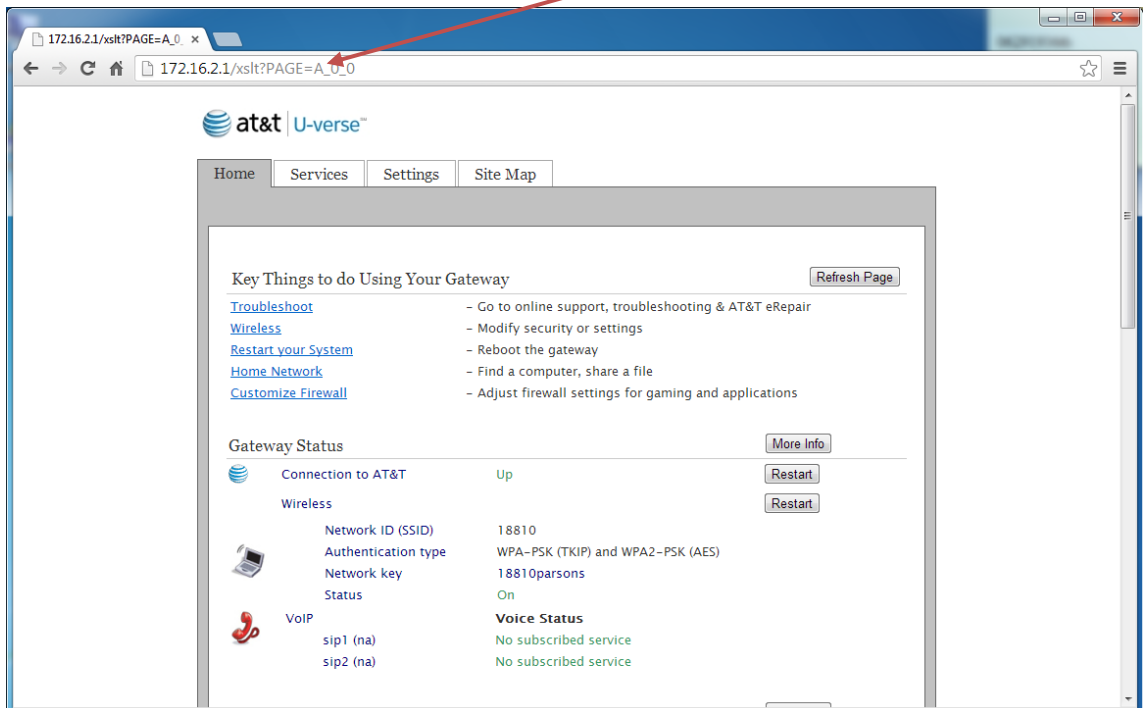


## How to Change IP Address ATT Uverse 2Wire Gateway Modem

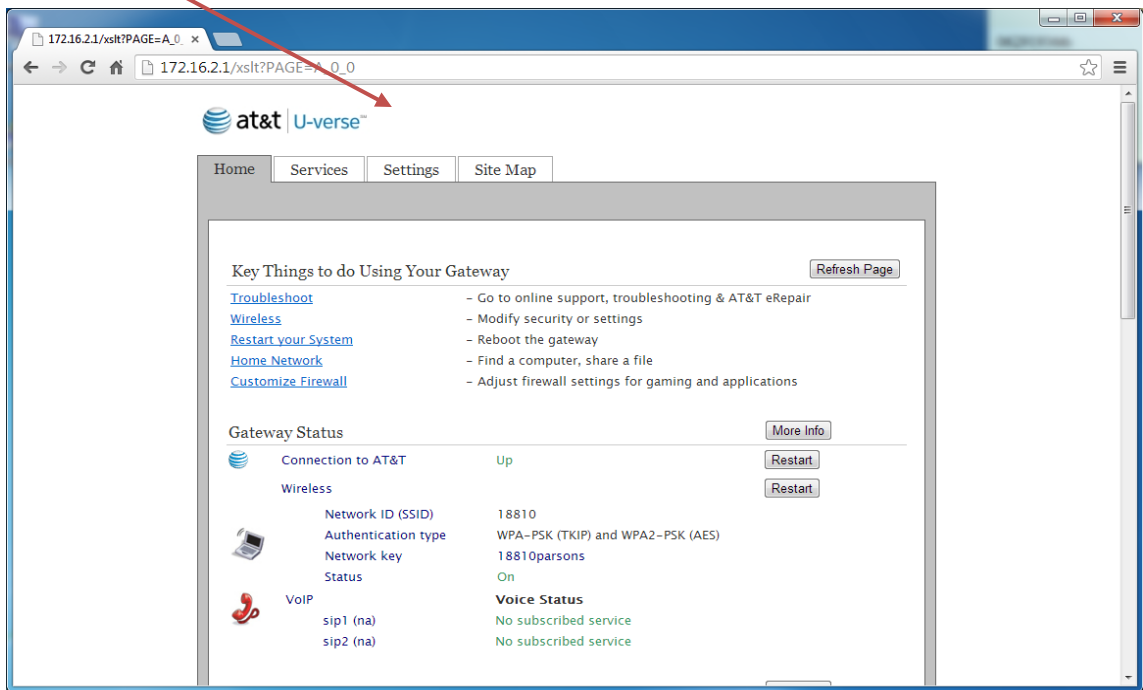
1. Locate System Password printed on outside of modem.



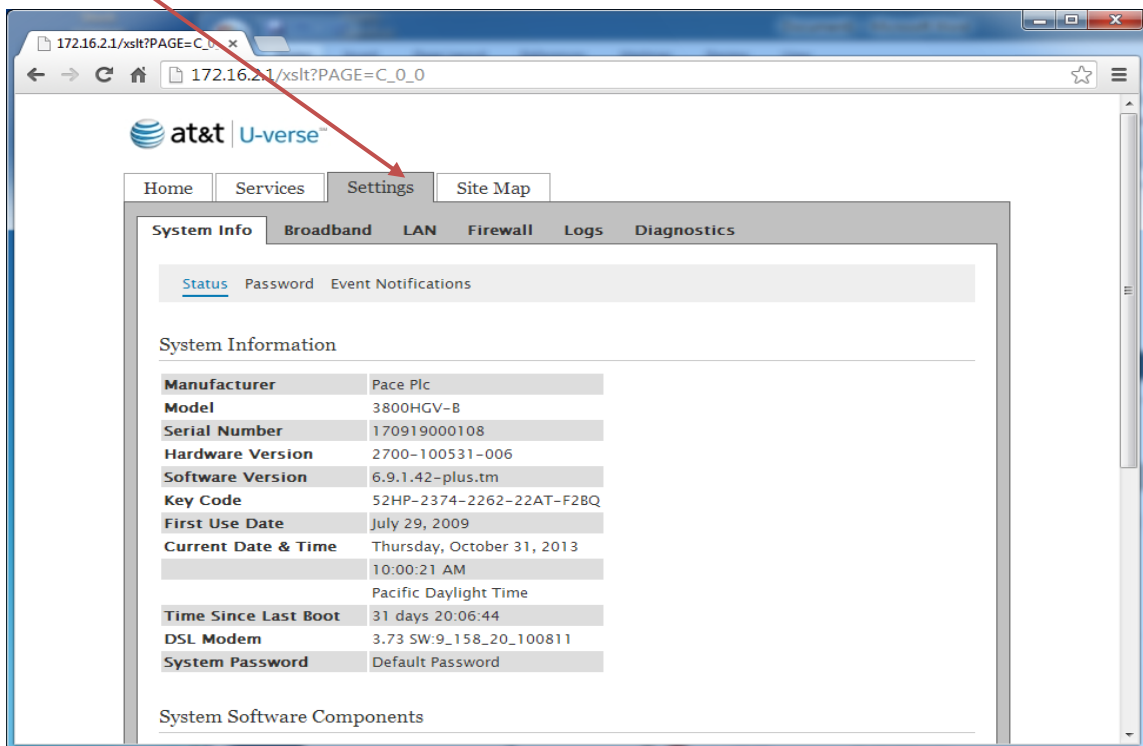
2. Open a web browser Google Chrome for example and type 192.168.1.254 in address window.  
Note: Example address 172.16.0.0 is the desired outcome.



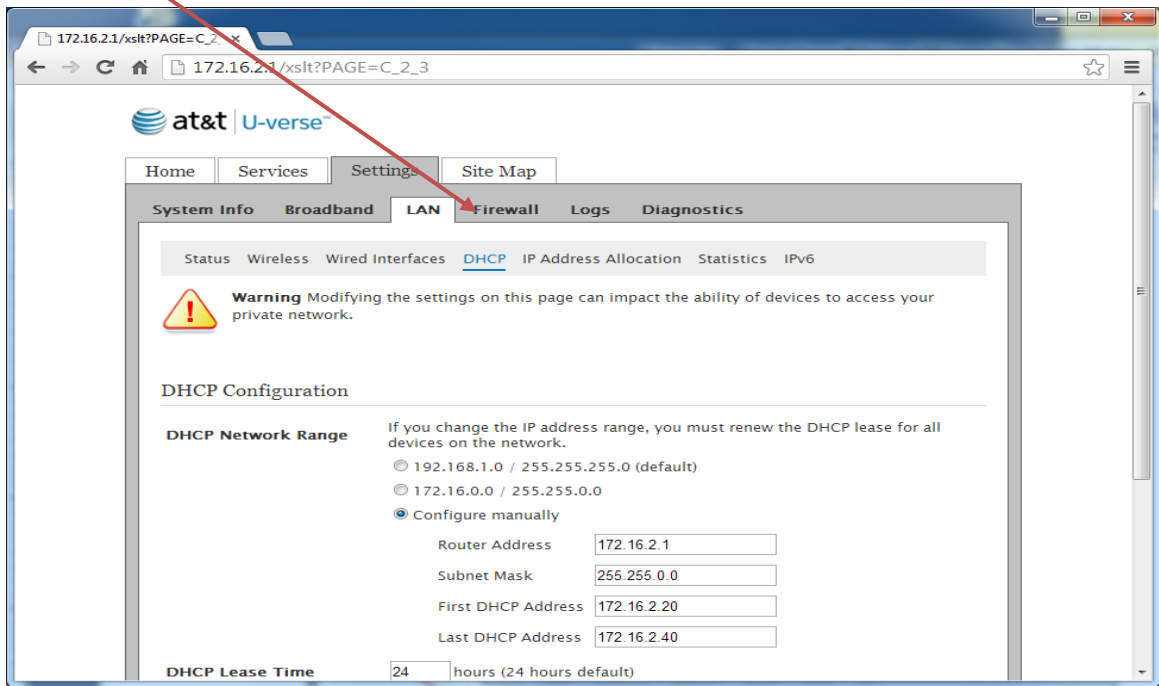
3. Select Settings Tab.



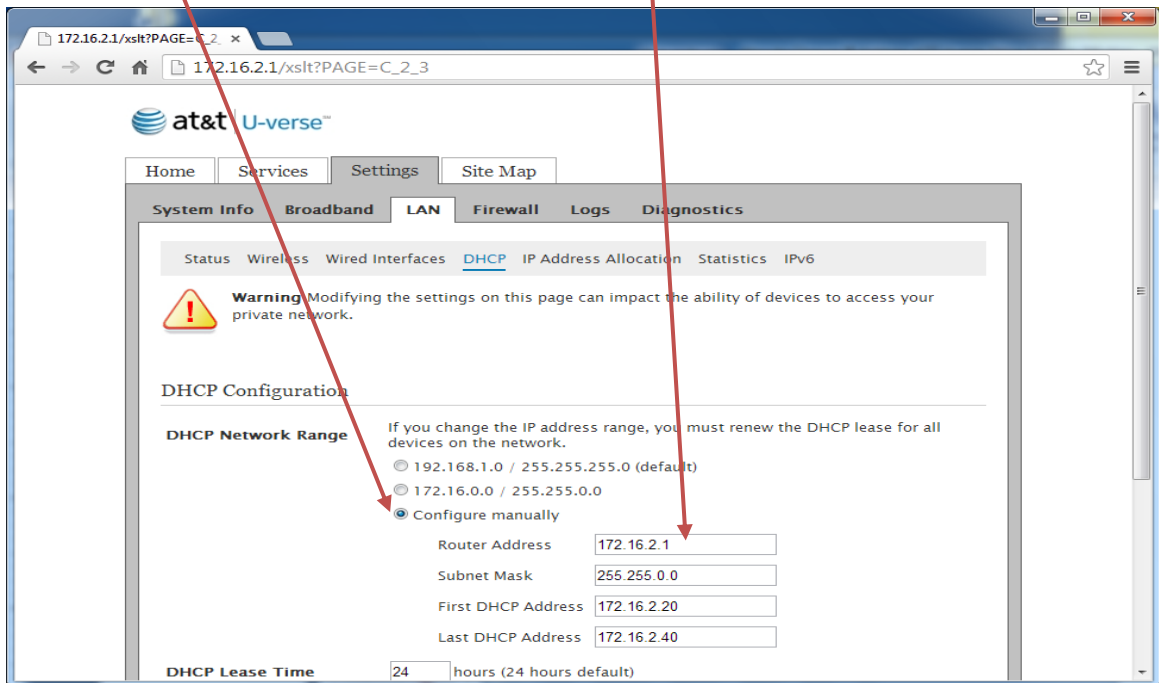
4. Select LAN Tab



5. Select DHCP



6. Select Configure manually and enter in the displayed parameters



7. Select Save button

A screenshot of a web browser displaying the DHCP Configuration page. The browser's address bar shows the URL `172.16.2.1/xslt?PAGE=C_2_3`. At the top, there is a warning icon and text: "Warning: Modifying the settings on this page can impact the ability of devices to access your private network." Below this is the "DHCP Configuration" section. Under "DHCP Network Range", there are three radio button options: "192.168.1.0 / 255.255.255.0 (default)", "172.16.0.0 / 255.255.0.0", and "Configure manually" (which is selected). Below these are input fields for "Router Address" (172.16.2.1), "Subnet Mask" (255.255.0.0), "First DHCP Address" (172.16.2.20), and "Last DHCP Address" (172.16.2.40). The "DHCP Lease Time" is set to 24 hours. At the bottom, there is a dropdown menu for "New Device DHCP Pool" set to "Private Network" and a "Save" button. A red arrow points from the "Save" button in this screenshot to the "Submit" button in the next screenshot.

8. Enter System Password from step 1 and select Submit

A screenshot of the AT&T J-verse login page. The browser's address bar shows the URL `172.16.2.1/xslt?PAGE=C_2_3_POST&NEXTPAGE=C_2_3_POST`. The page features the AT&T logo and "J-verse" branding. There are navigation tabs for "Home", "Services", "Settings", and "Site Map". A "Login" section contains a "Password:" label and an input field. A "Submit" button is located to the right of the input field. A red arrow points from the "Submit" button in this screenshot to the "Save" button in the previous screenshot.

9. Done